

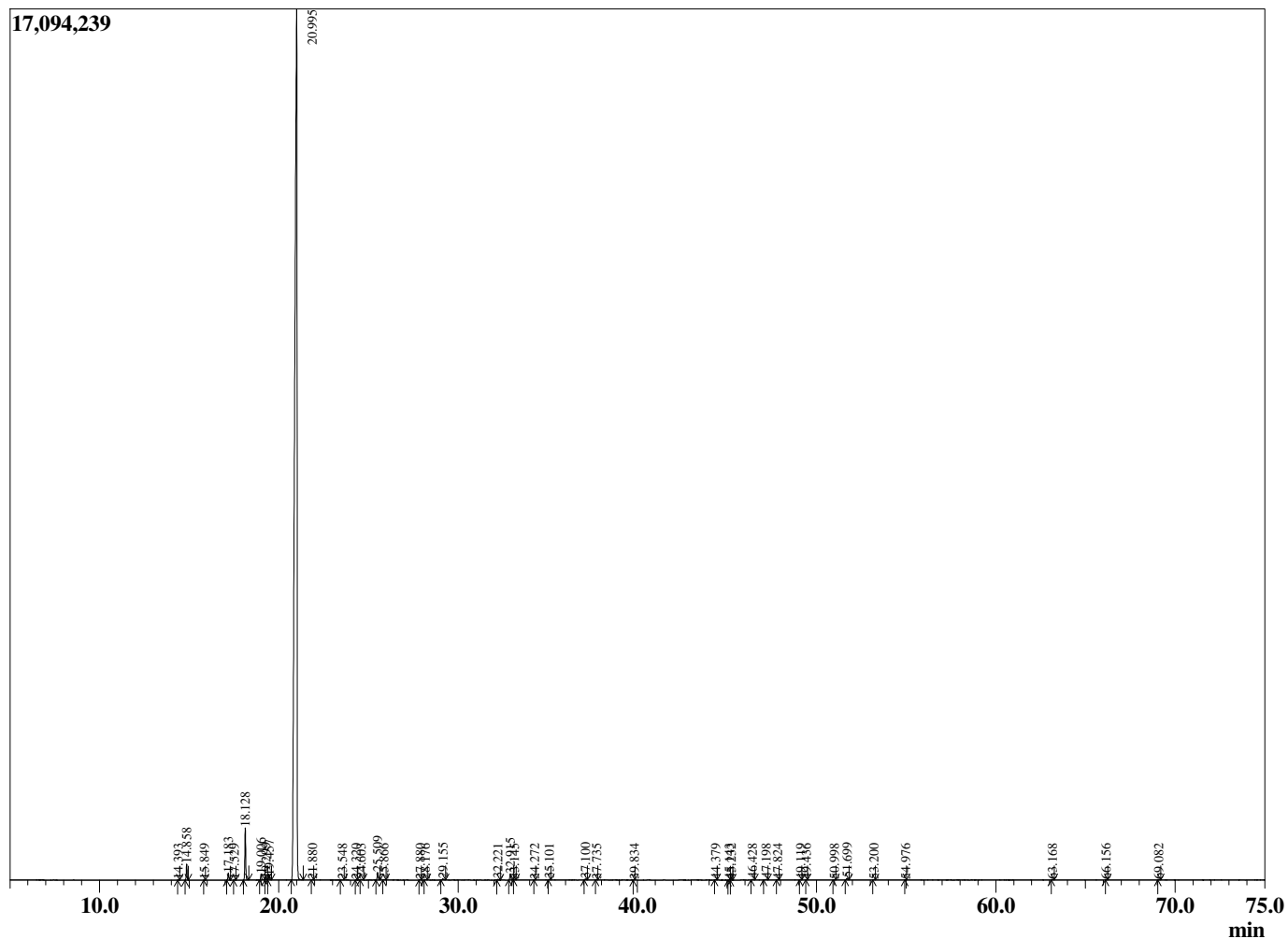
Sample Information

Sample Type : Essential Oil
 Sample Name : Citrus sinensis

Orange Sweet Italy
 Lot# ITZ13-ZC
 Country: Italy



Chromatogram Citrus sinensis



R.Time	Name	Area%
14.393	alpha-Thujene	0.00
14.858	alpha-Pinene	0.64
15.849	Camphene	0.00
17.183	Sabinene	0.30
17.529	beta-Pinene	0.02
18.128	Myrcene	2.21
19.006	Octanal	0.28
19.299	alpha-Phellandrene	0.05
19.457	delta-3-Carene	0.19
20.995	Limonene	94.90
21.880	trans-beta-Ocimene	0.01
23.548	trans-Sabinene hydrate	0.02
24.320	Isoterpinolene	0.01
24.603	Terpinolene	0.03
25.509	Linalool	0.37
25.866	Nonanal	0.02
27.880	cis-Limonene oxide	0.01
28.176	trans-Limonene oxide	0.02
29.155	Citronellal	0.07
32.221	alpha-Terpineol	0.04
32.915	Decanal	0.33
33.145	Octyl acetate	0.01
34.272	Citronellol	0.01
35.101	Neral	0.03
37.100	Geranial	0.06
37.735	Perillaldehyde	0.01
39.834	Undecanal	0.00
44.379	alpha-Copaene	0.02
45.143	beta-Cubebene	0.02
45.232	beta-Elemene	0.01
46.428	Dodecanal	0.04
47.198	beta-Caryophyllene	0.03
47.824	beta-Copaene	0.02
49.119	trans-beta-Farnesene	0.01
49.436	alpha-Humulene	0.01
50.998	Germacrene D	0.02
51.699	Valencene	0.09
53.200	delta-Cadinene	0.02
54.976	Elemol	0.01
63.168	beta-Sinensal	0.02
66.156	alpha-Sinensal	0.01
69.082	Nootkatone	0.01
		100.00